

 Sandberg®

5
Years
Warranty

Support

<http://helpdesk.sandberg.world>

Warranty

There is a five-year warranty on your Sandberg product. Please read the warranty terms and register your new Sandberg product at www.sandberg.world/warranty

5

Years
Warranty

Wireless Vertical Mouse Pro Item no. 630-13

www.sandberg.world
info@sandberg.world

Sandberg A/S
Bregnerodvej 133D,
3460 Birkerød, Denmark

Made in China



NOTE: For optimal battery performance, we recommend fully discharging and recharging the Mouse at least once every three months.



For information on handling electronic waste, see www.sandberg.world/weee



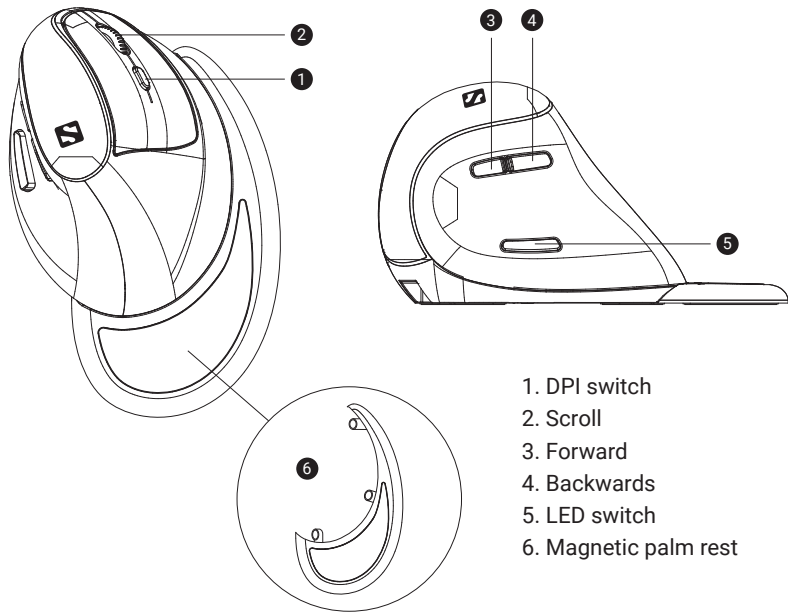
Quick Guide

630-13

www.sandberg.world

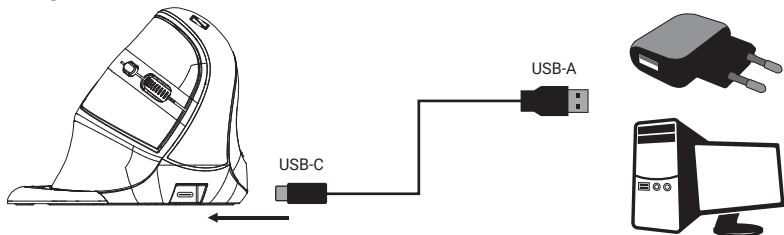
Wireless Vertical Mouse Pro

Product preview

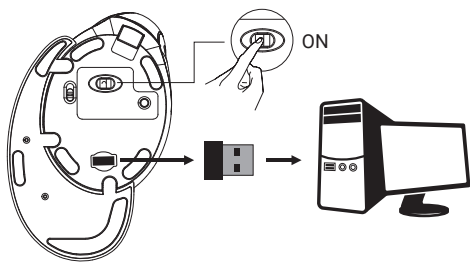


1. DPI switch
2. Scroll
3. Forward
4. Backwards
5. LED switch
6. Magnetic palm rest

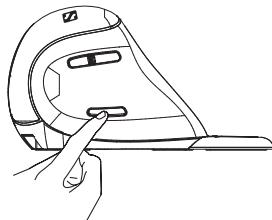
Charge



Installation



LED light



Press 2-3 seconds
to turn on/off



Declaration of Conformity

Manufacturer: Sandberg A/S
Address: Bregnerødvej 133D, 3460 Birkerød, Denmark
Product description: Wireless Vertical Mouse
Product name/Type no: Sandberg Wireless Vertical Mouse Pro 630-13

We declare under our sole responsibility that the products, to which this declaration relates, are in conformity with the Council Directives on the approximation of the laws of the EEC Member States relating to the following:

EMC Directive 2014/30/EU
RED Directive 2014/53/EU
RoHS Directive 2011/65/EU with amendment (EU)2015/863

Following standards were applied:

EMC: EN 55032:2015/A11:2020
EN IEC 61000-3-2:2019
EN61000-3-3:2013/A1:2019
EN55035:2017/A11:2020

RED: EN 62479:2010
EN 50663:2017
EN IEC 62368-1:2020+A11:2020
EN 50332-2:2013
ETSI EN 301 489-1 V2.2.3 (2019-11)
ETSI EN 301 489-17 V3.2.4 (2020-09)
ETSI EN 300 328 V2.2.2 (2019-07)

RoHS: IEC 62321-3-1:2013
IEC 62321-4:2013+A1:2017
IEC 62321-5:2013
IEC 62321-6:2015
IEC 62321-7-1:2015
IEC 62321-7-2:2017
IEC 62321-8:2017

Date: 23. June 2022

Location: Birkerød, Denmark

Name: Anders Petersen
Brand Director



Signature

**CE letter of
conformity**